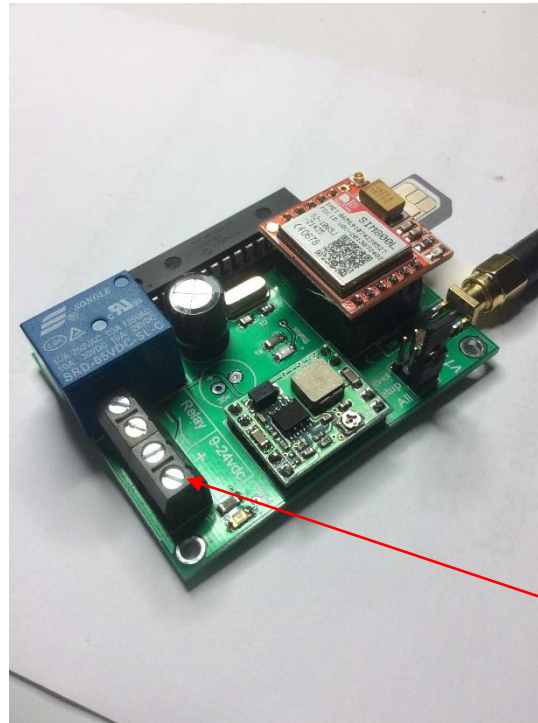


GSM V17.3s 2018

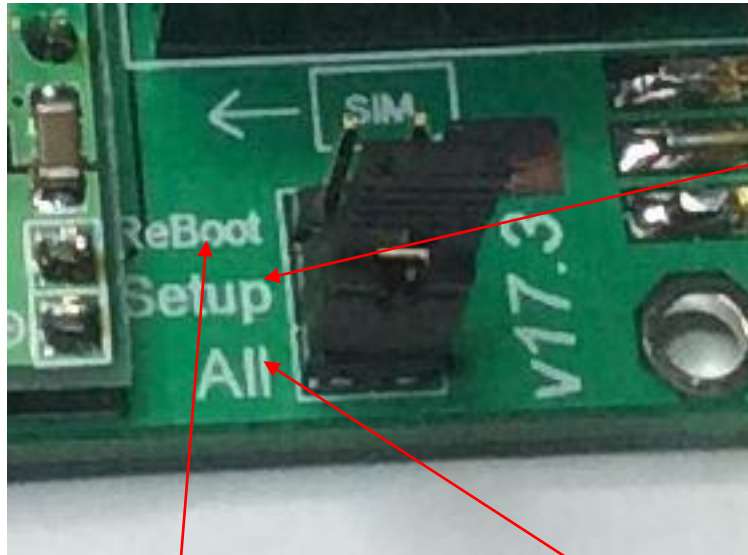


GSM Supply



Supply
9-24vdc

GSM Setup



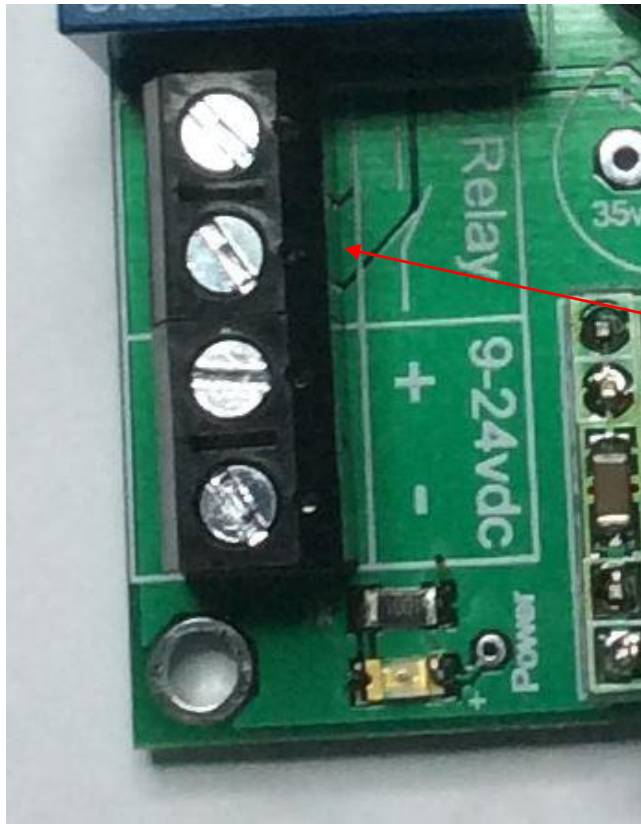
ReBoot:-
This Reconnects
MCU with GSM
every 2 Hours if
connected.

When Setup Switch is in ON position, call the unit, the call will be disconnected, DONE your number is now saved and you are the administrator.
Place Setup Switch back into OFF position.

To save other numbers, using the Admin Phone, text "TS1xxx"
1 = Position of saved number
xxx = Last three digits of the number
Max 9 Numbers.

To erase all numbers, using the Admin Phone, text "ERA"
To erase one number text "ERM1"
This will erase just position 1 number.
All switch accepts all incoming calls and texts. No 1 Switch

GSM Relay



Relay Connection =
Normally Open

GSM – Calling the Unit

- When calling the GSM, the Relay default time = 1 Second pulse on
- When you call the unit, the call will be disconnected not costing you any money to ring the GSM.

GSM Texting

- When Texting the GSM, to activate Relay 1 text “R1on”
- Please do not text the “” also case sensitive Capital R.
- If Solid mode has been activated, texting will as above, but to turn off the relays, Relay 1 = “R1off”.

GSM Texting – Pulse / Solid Function

- As default pulse mode is active
- To Change to Solid Mode, text “So1”
- To Change back to Pulse mode, text “Pu1”

GSM Texting - Respond

- To Activate the respond feature.
- Text, "TTxxxxxxxxxx" the x's are your number, it will be 11 digits long
- Text, "Ron" this will put the unit into respond mode, so any function that happens it will respond to the number above
- For example if you activate Relay in pulse mode, it will reply with a text saying "Relay Pulsed on"

GSM – Changing the Time

- To Change the timing for Relays
- Text “T1xxx”
- The xxx’s are Seconds, MAX 255 seconds

GSM – Activating Relay with Time

- To activate the Relay with Seconds, text – “RSxx (xx’s being your time in seconds)
- Example RS12 = 12 seconds, RS05 = 5 seconds
- You must place Zero in before number if time under 10 seconds !
- Max = 99 Seconds
- To Activate the Relay with Minutes, text – “RMxx (xx’s being your time in minutes)
- Example RM20 = 20 Minutes, RM02 = 2 Minutes
- Max = 99 Minutes

GSM – Full Reset

- Both Switches should be in the ON position first.
- To Fully Reset the GSM text – “Z”
- When finished put Switches back to original position.